



AIR-LOG

SYSTEMS AND EQUIPMENT

FOR

**AIRCRAFT · MISSILE · and
SPACE VEHICLE
GROUND SUPPORT**

AIR LOGISTICS CORPORATION

3600 E. FOOTHILL BOULEVARD • PASADENA, CALIFORNIA 91109

TELEX NO. 67-5350

TELEPHONE AREA CODE 213
795-9971 • 681-1101

THIS CATALOG...

presents a brief functional description, major dimensions and operational characteristics of the component elements comprising the AIR-LOG GROUND SUPPORT SYSTEM for

- AIRCRAFT
- MISSILES
- SPACE VEHICLES



BASIC ELEMENTS

OF THE AIR-LOG SYSTEM

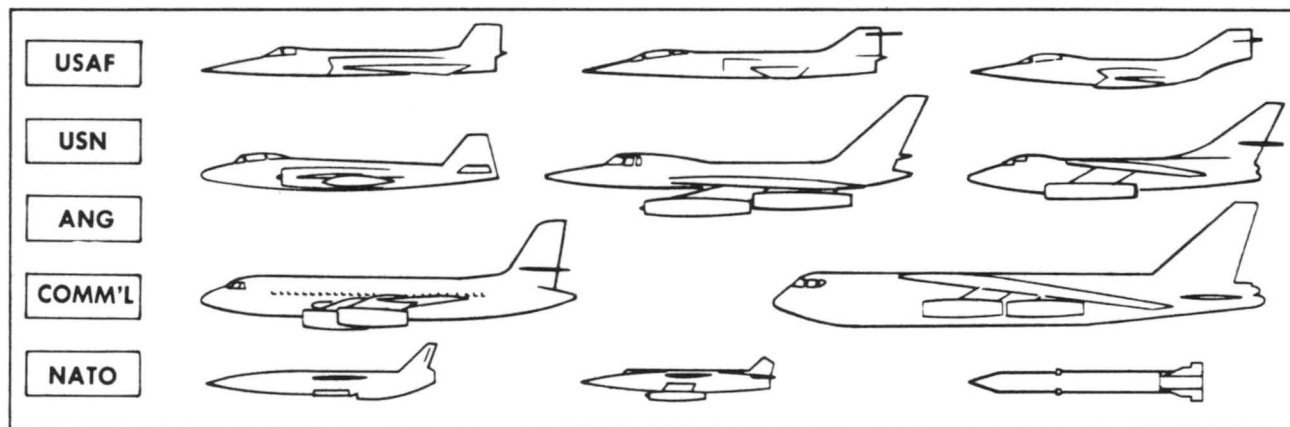
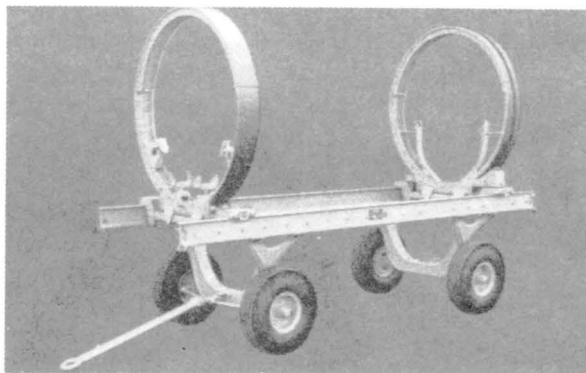
POSITIONING
TRAILER



ENGINE HANDLING ADAPTER



ROLL-OVER ADAPTER

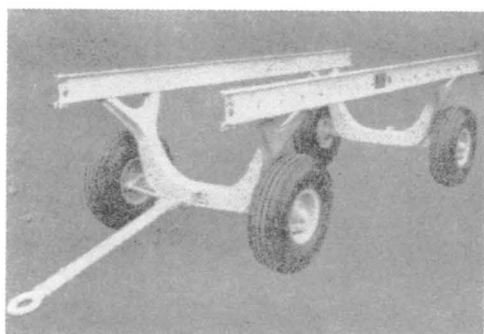


APPLICATIONS

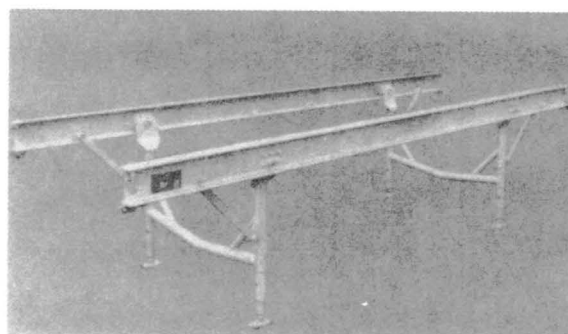
OF THE BASIC
AIR-LOG SYSTEM

REMOVAL AND INSTALLATION OF COMPONENTS	POSITIONING TRAILERS
AIR AND GROUND TRANSPORTATION	TRANSPORTATION TRAILERS
BUILD-UP AND TEST	WORKSTANDS ENGINE REPAIR & TEST SUB-SYSTEMS
INSPECTION AND REPAIR	WORKSTANDS MONORAIL HOISTS ROLL-OVER ADAPT.
STORAGE	WORKSTANDS TRANSP. TRAILERS



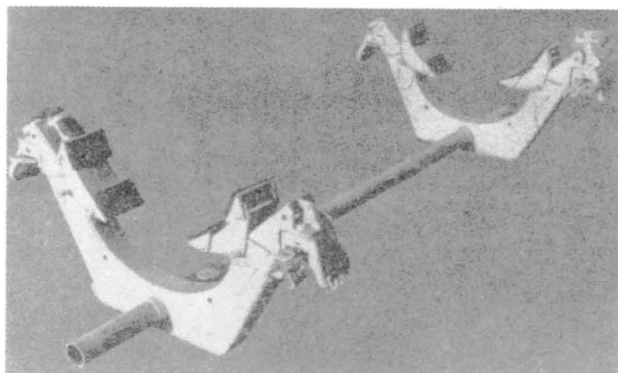
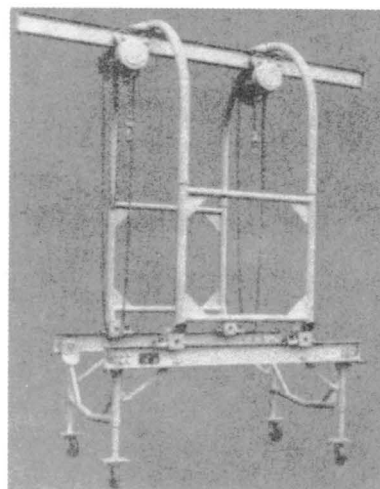


TRANSPORTATION TRAILER



WORKSTAND

UNIVERSAL COMPONENT ADAPTER

MONORAIL
HOIST

ENGINES	ROCKETS	BOMBS AND AMMO	TANKS AND STORES	TURRETS	PODS	NOSE SECTIONS	RADOMES	TAIL SECTIONS	WING PANELS	CONTROL SURFACES
•	•	•	•	•	•	•	•	•	•	•
•	•	•	•	•	•	•	•	•	•	•
•	•	•	•	•	•	•	•	•	•	•
•	•	•	•	•	•	•	•	•	•	•
•	•	•	•	•	•	•	•	•	•	•



MATCHING RAILS

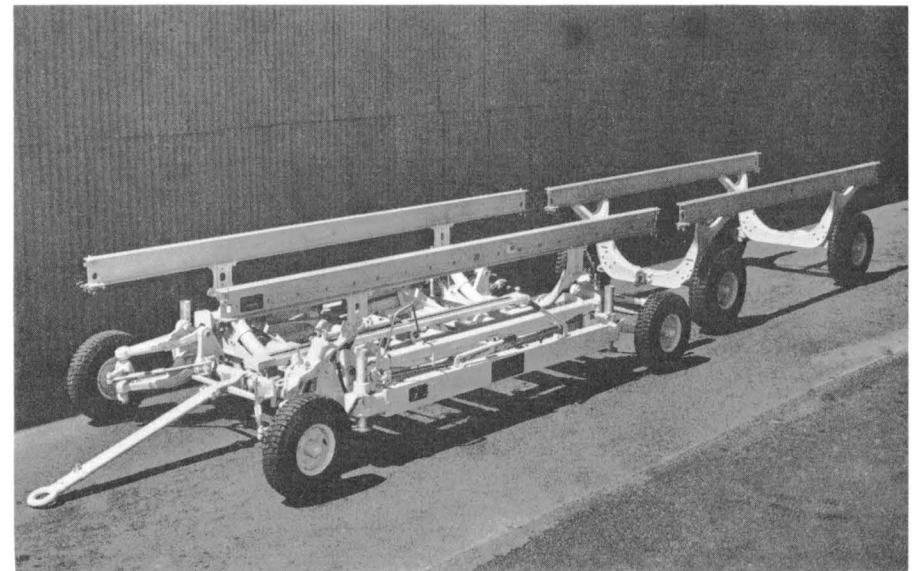
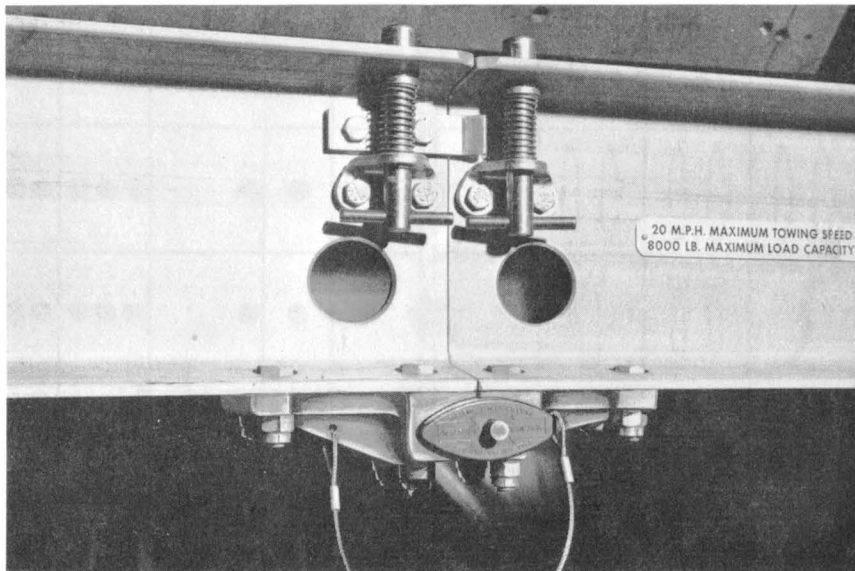
4

All elements of the AIR-LOG SYSTEM incorporate MATCHING RAILS with quick operating rail end couplings which permit mating of the POSITIONING TRAILERS and other elements of the system to form a CONTINUOUS RAIL. This operation normally is accomplished by two men in approximately 90 seconds. This continuous rail feature, together with the ROLLER ADAPTERS, makes it possible to ROLL-TRANSFER engines and components between the POSITIONING TRAILERS and the transportation, repair or storage elements of the AIR-LOG system without the use of ANY OTHER HANDLING EQUIPMENT. ELIMINATION of heavy and cumbersome CRANES, HOISTS, SLINGS, etc., REDUCES THE COST, MAN HOURS AND HAZARD in handling operations and IMPROVES the OVERALL MOBILITY of the support system.



Above: Built-up, "A" section rail for extra heavy duty.

Below: Solid, "I" section rail used on most Air-Log System elements.

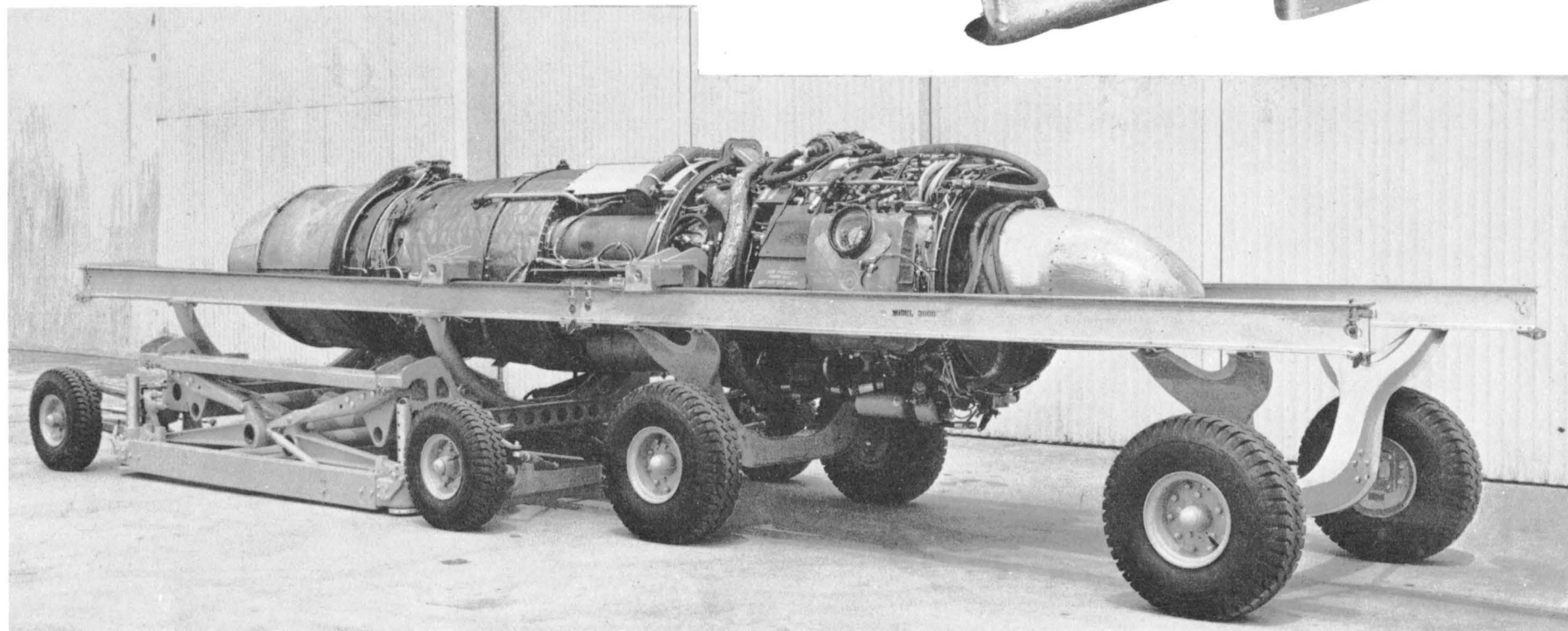
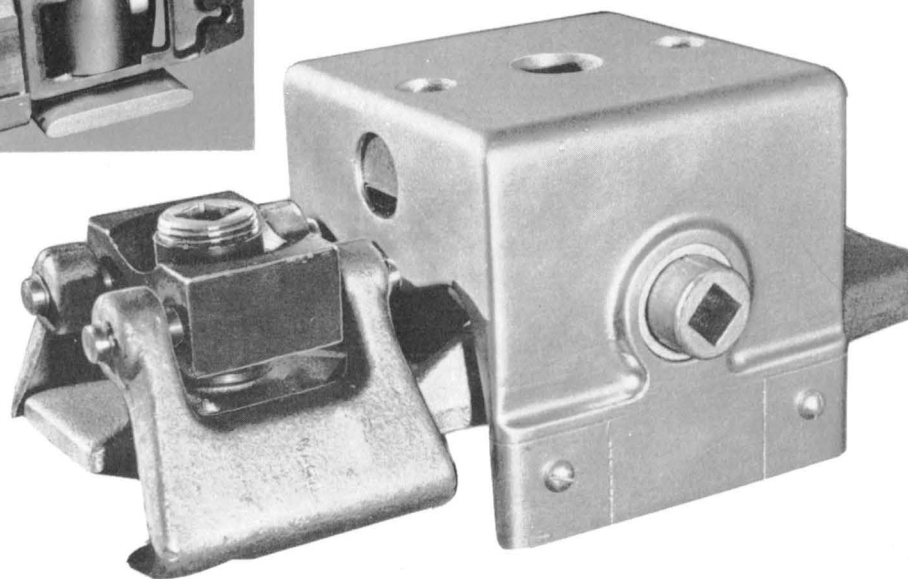
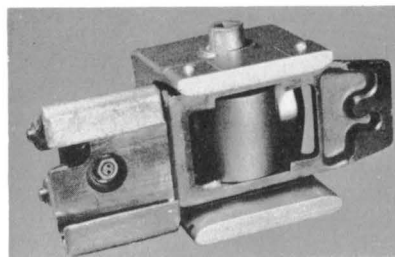


AIR-LOG SYSTEMS CORPORATION



ROLL TRANSFER

The standard ROLLER ADAPTERS provide the rolling elements between the various ENGINE and COMPONENT ADAPTERS and the rails. Each ROLLER ADAPTER includes a CLAMPING BRAKE and a ROLLER DRIVE which permits the use of standard socket drive ratchets or speed handles to roll the load along the rails.





POSITIONING TRAILERS

These hydraulically actuated precision units are the key elements in all Air-Log low-level, horizontal handling systems. The positioning trailer, as implied by the designation, is used to position jet engines, rocket segments, and aircraft and missile components for installation and removal or in any similar operation requiring three-dimensional handling of the load.

Positioning is achieved and precisely controlled through a combination of hydraulic and mechanical actuators which produce pitch, roll, yaw, and transverse movement together with vertical lift.

All models are equipped with hand operated hydraulic pumps; "B" designated models are built for use with the 2400 Series Electro-Hydraulic Power Pack.

Other design features include:

Retractable wheel suspension, on all models except the lightweight 1030, is hydraulically controlled. This feature permits full retraction of the trailer chassis or partial lowering to adjustable stanchions for solid positioning.

90 degree wheel rotation, on all but the Model 1030, permits sidewise mobility and "pinwheel" rotation of the positioning trailer.

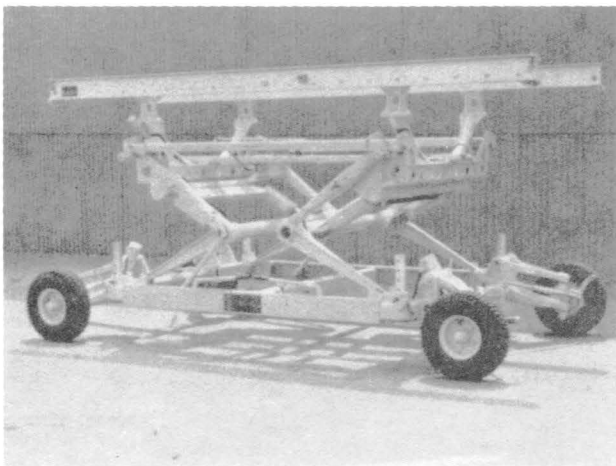
Centerline winches, on Models so equipped (see following table), facilitates movement of heavy loads when rails are inclined.

The broad range of capacities, rail gauges and other pertinent information appear on the following data table.





The 15000-pound capacity MODEL 6200 POSITIONING TRAILER shows integral power pack and inching wheel drive

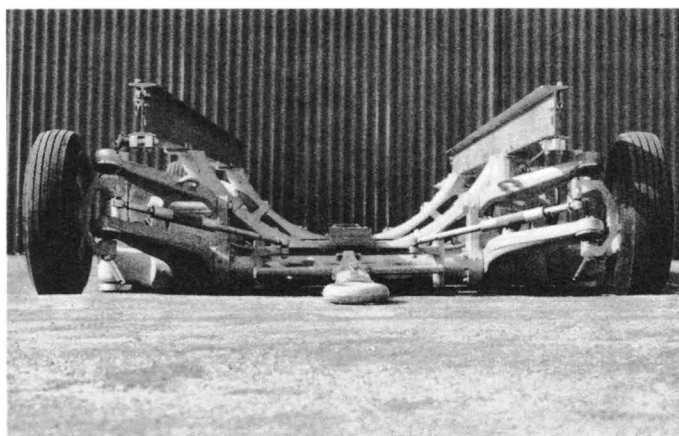
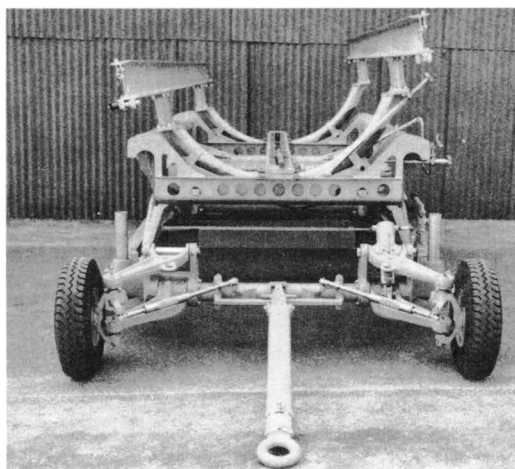
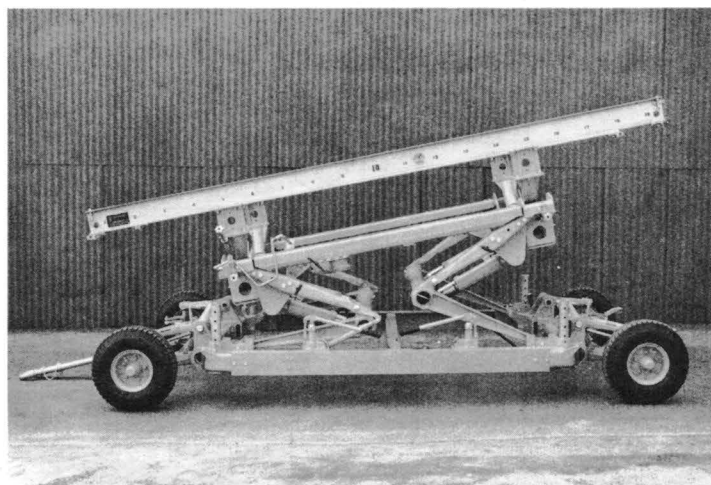


Standard, MODEL 4000A POSITIONING TRAILER is an 8000-pound capacity unit.



Lightweight, MODEL 1030, positions engines and components up to 3000 pounds.





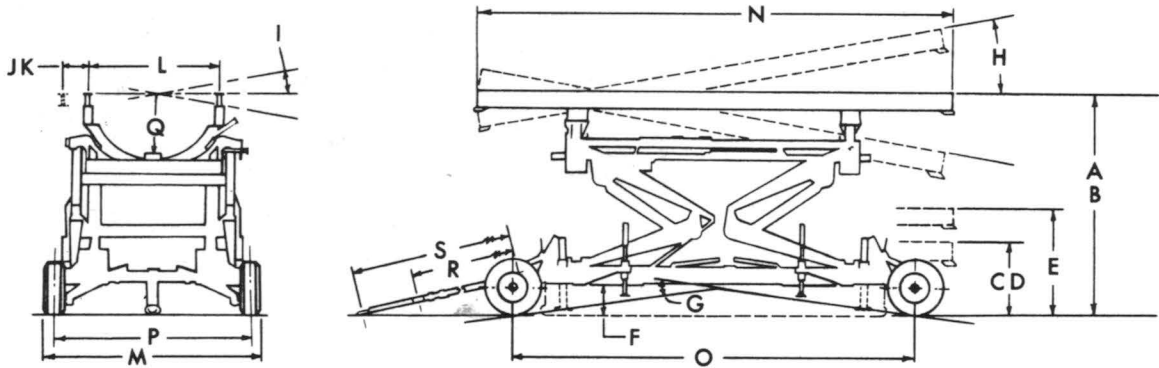
POSITIONING TRAILERS

MAJOR DIMENSIONS AND OPERATIONAL DATA

Note "B" Models are Equipped for Installation of the 2400 Series Power Pack

MODEL		1030	4000A 4000B	4060	4072	4100 4100B	4120 4120B	4160 4160B	4172	6200
A	Capacity (pounds)	3000	8000	8000	8000	10,000	10,000	10,000	10,000	15,000
	Max. Rail Ht. (Spacer)		89.0	90.0		115.0		118.0		
B	" " "w/o Spcr.	57.0	82.0	85.0	91.0	110.0	122.3	113.0	115.0	85.13
C	Min. Rail Ht. w/ Spcr.		31.5	32.5		34.0		37.0		
D	" " " w/o Spcr.	22.0	24.5	27.5	34.0	29.0	37.3	32.0	34.0	29.0
E	Transpt. Ht. w/o Spcr.	33.0	35.5	38.5	45.0	39.5	47.8	42.5	44.5	37.13
F	Ground Clear	0-5.0	0-11.0	0-11.0	0-11.0	0-10.5	0-12.5	0-10.5	0-10.5	0-8.13
G	Ramp Angle Clear		N/A	N/A	N/A	N/A	N/A	N/A	N/A	20°
H	Tilt Angle (Rail)	+ 10°	+ 10°	+ 10°	+ 10°	+ 10°	+ 10°	+ 10°	+ 10°	+ 7-1/2°
I	Roll Angle (Rail)	+ 7°	+ 10°	+ 10°	+ 10°	+ 10°	+ 15°	+ 8°	+ 10°	+ 5°
J	Yaw Angle (Rail)	+ 3°	+ 2.25°	+ 2.5°	+ 2.25°	+ 1.75°	+ 1.75°	+ 1.75°	+ 1.75°	+ 2°
K	Lateral Movement	+ 2.0	+ 3.0	+ 3.0	+ 3.0	+ 3.0	+ 3.0	+ 3.0	+ 3.0	+ 4.0
L	Rail Spacing	48.0	48.0	60.0	72.0	48.0	90.0	60.0	72.0	48.0
M	Max. Width	61.2	78.0	78.0	80.5	78.0	96.0	78.0	84.0	94.35
N	Max. Length(w/o Towbar)	117.0	152.0	152.0	152.0	174.0	174.0	174.0	174.0	186.0
	Rail Length	85.0	152.0	152.0	152.0	174.0	174.0	174.0	174.0	186.0
O	Wheel Base	95.0	126.0	126.0	126.0	148.0	148.0	148.0	148.0	154.0
P	Wheel Tread	54.0	72.0	72.0	72.0	72.0	72.0	72.0	72.0	85.0
Q	Radial or Vert. Clear- ance Below Rail Caps	18.4	16.5 R. to 23.5 R.	23.0	25.5	16.5 to 21.5	25.5	23.0 to 28.0	16.5	18.0
R	Towbar (Min.)	48.0	44.5	44.5	44.5	44.5	44.5	44.5	44.5	72.0
	Towbar (Max.)	48.0	72.0	72.0	72.0	72.0	72.0	72.0	72.0	120.0
S	Tire Size	4.00x8	6.00x9	6.00x9	6.00x9	6.00x9	7.50x10	6.00x9	6.00x9	24x7.7
	Tire Inflation	80 psi	100 psi	100 psi	100 psi	100 psi	100 psi	100 psi	100 psi	150 psi
	Towing Speed	20 mph	20 mph	20 mph	20 mph	20 mph	20 mph	20 mph	20 mph	20 mph
	Unit Weight(pounds)	1300	2600	2500	3000	3400	3700	2950		7000
	90° Wheel Rotation	No	Yes	Yes	Yes	Yes	Yes	Yes	Yes	Yes
	Screw Adjust. Outriggers	No	No	No	No	Yes	No	No	Yes	No
	Adjust. Steady Rests	No	Yes	Yes	Yes	Yes	Yes	Yes	Yes	Yes
	Engine Removal Winch	No	Yes	No	Yes	Yes	No	No	Yes	No
	Self-Power "Inching"	No	No	No	No	No	No	No	No	Yes
	Integral Power Pack	No	No	No	No	No	No	No	No	Yes
	Nat. Stock No.		1730-00- 528-6616			1730-00- 554-4799				1730-00- 724-9610
	Air-Log Part No.	108918	100628A 106700	106354	105854	102650 106100	105997 106269	107159 106933	106005	107242

*4000A only **4100 shown; 4100B Stock No. 1730-00-655-8064





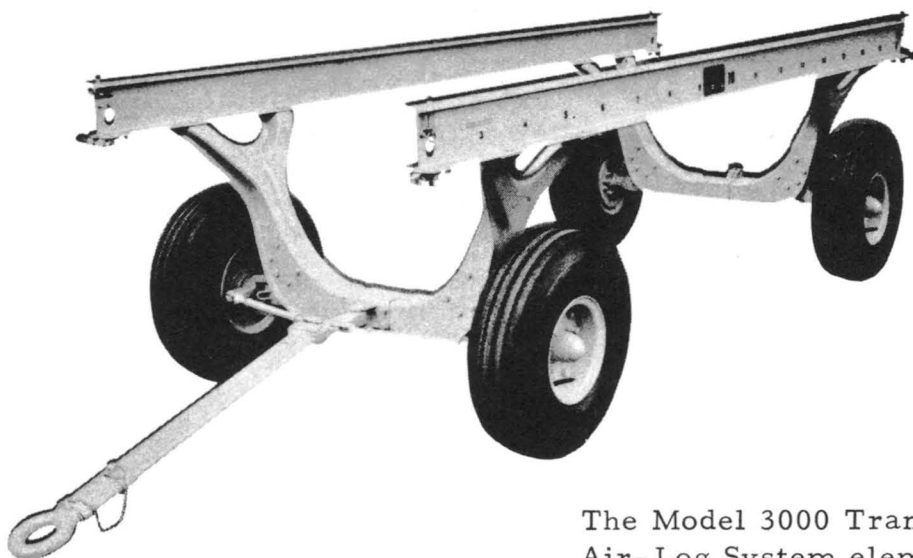
TRANSPORTATION TRAILERS & STANDS

Air-Log transportation trailers provide for air, truck and ground transportation of jet engines, rocket segments, aircraft and missile components and stores.

Rugged, simplified design permits higher net load capacities, at the same time insuring load protection under all transport conditions by virtue of the mixed spring rates involved in the combination of rails, frame and tires.

Load capacities, rail gauges and other design data for trailers and stands are listed in the following tables.

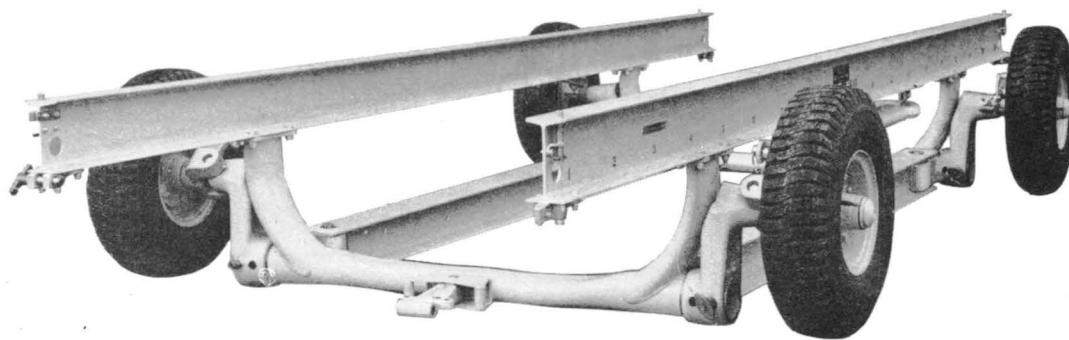




The Model 3000 Transportation Trailer. This Air-Log System element, an Air Force standard unit, has been in wide use in this country and abroad since 1954.



The 60 inch Model 3060 Double-End Steering Transportation Trailer. Other models in this category are the 60 inch 3060A and 3060B, the 48 inch 3000F and 3000G.



The 48 inch retractable Model 3030 Transportation Trailer. Other retractable models are the 48" 3010 and heavy duty 15000 lb capacity 6400, and the 60" models 3032 and 3060C.



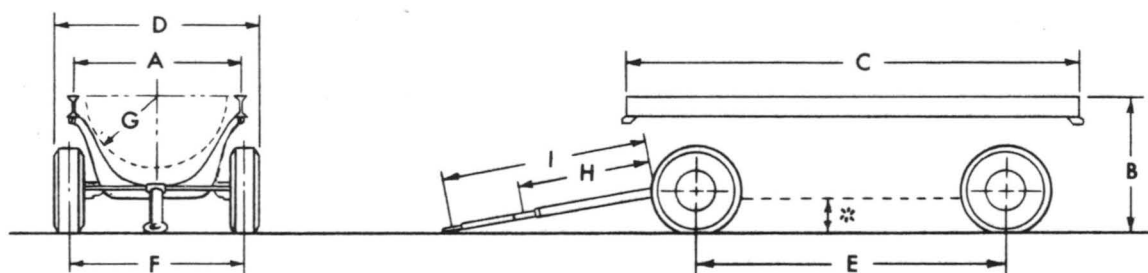
TRANSPORTATION TRAILERS

MAJOR DIMENSIONS AND OPERATIONAL DATA

MODEL		1200	1210	1230	1240	2000	3000	3000A	3000B
	Capacity (pounds)	3000	4500	3000	3000	4000	8000	8,000	8000
A	Rail Spacing	30.0	48.0	30.0	48.0	48.0	48.0	48.0	48.0
B	Rail Height	18.2	34.4	32.0	27.5	38.0	40.0	40.0	34.0
C	Rail Length	115.0	152.0	108.0	88.0	108.0	132.0	152.0	152.0
D	Max. Width	66.4	96.0	42.3	58.5	54.0	58.5	58.5	73.4
	Max. Length(w/o towbar)	115.0	152.0	108.0	88.0	108.0	132.0	152.0	152.0
E	Wheel Base	90.0	90.0	72.0	68.0	72.0	90.0	92.0	90.0
F	Wheel Tread	60.4	88.0	36.3	54.0	46.0	50.0	50.0	65.0
G	Radial or Vert. Clearance Below Rail Caps	6.1	18.5	13.0	18.0	21.0	21.5	21.5	21.5
H	Towbar Min.	--	--	44.5	49.0	44.5	44.5	44.5	44.5
I	Towbar Max.	60.0	60.0	72.0		72.0	72.0	72.0	72.0
	Tire Size	6.00x9	7.50x10	6.00x9	4.00x8	6.00x9	7.50x10	7.50x10	7.50x10
	Tire Inflation	30 psi	25 psi	40 psi	60 psi	30 psi	30 psi	30 psi	30 psi
	Towing Speed	20 mph	25 mph	20 mph	20 mph	20 mph	20 mph	20 mph	20 mph
	Unit Weight (pounds)	450	700	400	380	350	500	700	680
	Rear Wheels Steerable	No	No	No	No	No	No	No	No
	Nat. Stock No.		1450-00-726-1119	1740-00-690-5284		1740-00-516-7929	1740-00-516-7930	1740-00-680-2910	R1740-00-589-7082
	Air-Log Part No.	105332	106051	107238	108969	100334	100315	105021	104904

		3000D	3000E	3000F	3000G	3000H	3000J	3010	3020
	Capacity (pounds)	8000	8000	8000	8000	The 3000H is identical to the 3000A except for a 7210-11510 towbar and a 15.0 in. aft shift of rail position.	12,000	8000	8000
A	Rail Spacing	48.0	48.0	48.0	48.0		48.0	48.0	90.0
B	Rail Height	34.0	40.0	34.0	40.0		40.0	21.5-35.0	40.0
C	Rail Length	152.0	152.0	152.0	152.0		152.0	132.0	152.0
D	Max. Width	73.4	58.5	73.4	58.5		58.5	73.0	99.5
	Max. Length(w/o towbar)	152.0	152.0	152.0	152.0		152.0	132.0	152.0
E	Wheel Base	90.0	92.0	90.0	92.0		92.0	101.7	90.0
F	Wheel Tread	65.0	50.0	65.0	50.0		50.0	67.0	92.0
G	Radial or Vert. Clearance Below Rail Caps	21.5	21.5	21.5	21.5		21.5	17.5	24.0
H	Towbar Min.	44.5	44.5	44.5	44.5		44.5	44.5	44.5
I	Towbar Max.	72.0	72.0	72.0	72.0		72.0	72.0	72.0
	Tire Size	7.50x10 [†]	7.50x10	7.50x10	7.50x10		7.50x10	6.00x9	7.50x10
	Tire Inflation	30 psi	30 psi	30 psi	30 psi		30 psi	100 psi	30 psi
	Towing Speed	20 mph	20 mph	20 mph	20 mph		20 mph	20 mph	20 mph
	Unit Weight (pounds)	710	593	730	645		735	750	750
	Rear Wheels Steerable	No	No	Yes	Yes		No	No	No
	Nat. Stock No.		1740-00-770-9859			1740-00-791-4749		1740-00-554-1667	
	Air-Log Part No.	106722	107640	107710	107656	107889	108367	104624	105184

(Continued)



MODEL	3030	3032	3060	3060A	3060B	3060C	6300	6400
Capacity (pounds)	8000	8000	8000	8000	10,000	8000	15,000	15,000
A Rail Spacing	48.0	60.0	60.0	60.0	60.0	60.0	48.0	48.0 ***
B Rail Height	21.5-35.0	19.0-46.7	34.0	39.0	34.0	30.2-50.0	34.0	26.0-35.5
C Rail Length	152.0	152.0	132.0	132.0	132.0	132.0	152.0	136.0
D Max. Width	73.0	88.5	85.4	85.4	85.4	77.5	78.0	84.5
Max. Length(w/o towbar)	152.0	152.0	132.0	132.0	132.0	132.0	152.0	136.0
E Wheel Base	90.0	90.0	90.0	90.0	90.0	90.0	90.0	106.0
F Wheel Tread	67.0	82.5	77.0	77.0	77.0	71.0	68.0	76.5
G Radial or Vert. Clearance Below Rail Caps	17.5	22.0/ 15.0	23.3	28.3	23.3	24.5	18.5	17.0
H Towbar Min.	44.5	44.5	44.5	44.5	44.5	44.5	5', 10'	72.0
I Towbar Max.	72.0	71.5	72.0	72.0	72.0	72.0	or 15'	120.0
Tire Size	6.00x9	6.00x9	7.50x10	7.50x10	7.50x10	6.50x10	7.50x10	24x7.7
Tire Inflation	100 psi	100 psi	30 psi	30 psi	30 psi	100 psi	75 psi	75 psi
Towing Speed	20 mph	20 mph	20 mph	20 mph	20 mph	20 mph	20 mph	20 mph
Unit Weight (pounds)	770	800**	750	775	850	750**	850	3,450
Rear Wheels Steerable	No	Yes	Yes	Yes	Yes	Yes	No	Yes
Nat. Stock No.	1740-00-580-0494							1740-00-724-9611
Air-Log Part No.	105722	109868	106281	106377	106622	107223	107330	107261

Model 3032

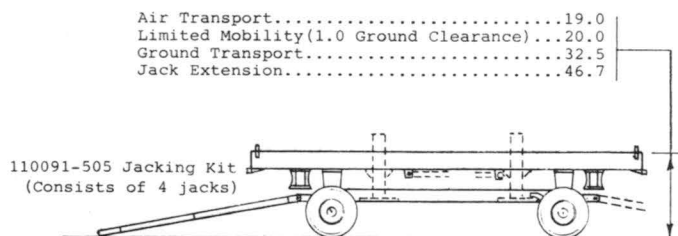


Figure above illustrates application of 110091-505 Jack Kit to Model 3032 Trailer. Jacks are used as interim support when retracting or raising the loaded trailer. For the Model 3032, spacers are available up to 7" to increase the radial and vertical clearance below rail caps.

Model 3060C

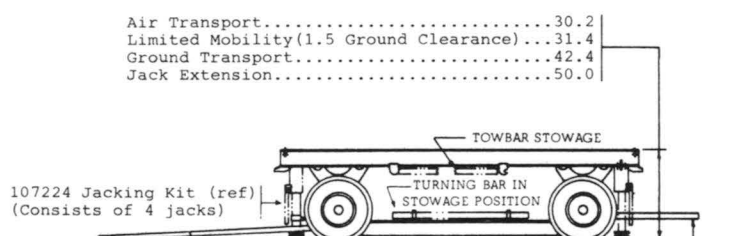


Figure above illustrates application of 107224 Jack Kit to Model 3060C Trailer. Jacks are used as interim support when retracting or raising the loaded trailer.

* Retracting wheels allow the trailer to rest on a sub-frame during air or truck transportation. A limited mobility position raises sub-frame 1.5 to 2.0 inches from floor. Models 3030 and 3060C incorporate shear-type shock absorbers which isolate the sub-frame from the upper rail assembly.

** Weight without ground jacking kit which consists of four hand hydraulic units supporting the trailer at rail-ends.

*** Wheel support arms actuated by hydraulic rams vary the rail height at either end of the trailer to maintain near-level attitude while negotiating loading ramps.

† Rubber Cushion Tires





A I R L O G I S T I C S C O R P O R A T I O N

WORKSTANDS

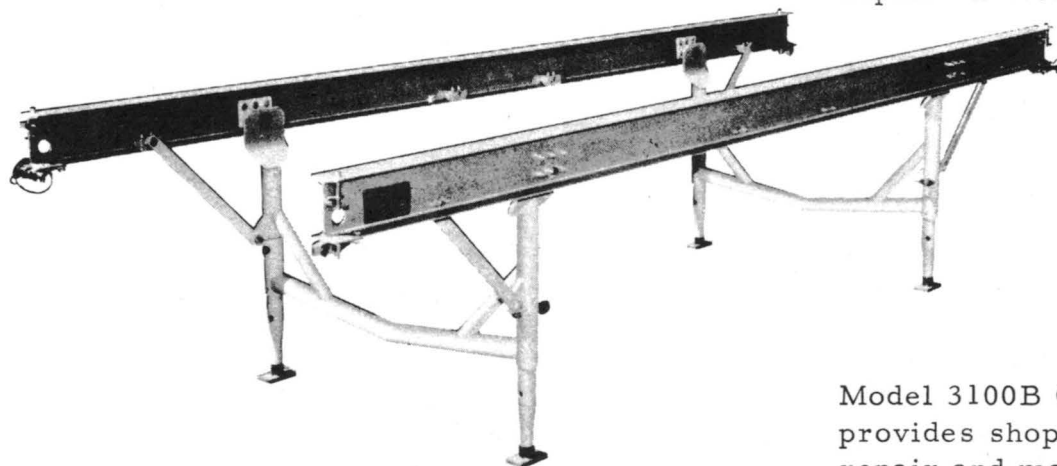
Air-Log workstands are designed to provide a portable, light-weight facility for build-up, inspection, repair or storage of jet engines, rocket segments and aircraft and missile components.

All stands incorporate the parallel, matching rail feature which permits their use singly or coupled as a stationized assembly line installation. This same feature also permits use of the 4600 Series Monorail Hoists and the 4500 Series Rotational Adapters as rolling, rail mounted inspection and repair fixtures.

Capacities, rail gauges and other pertinent design features are listed in the following tables.



The Model 3100A, Adjustable Height Workstand. This element is a widely used standard for maintenance, minor repair and storage.



Model 3100B Castered Workstand, provides shop-floor mobility in repair and maintenance areas.



The Model 3110 Workstand is utilized for maintenance and storage of engines and components ranging to 10000 pounds.



WORKSTANDS

MAJOR DIMENSIONS AND OPERATIONAL DATA

MODEL	1400	1440	3100	3100A	3100B	3100E	3109	3110
Capacity (pounds)	3000	3000	8000	8000	2200	Identical to 3100B except for larger casters which add 3.0 to height.	750	10,000
A Rail Spacing	30.0	48.0	48.0	48.0	48.0		9.0	48.0
B Rail Height (max.)	19.0	27±.5	33.0	39.0*	30.0**		29.5	39.0*
C Rail Height (min.)	16.0		30.0	30.0*	39.0**			30.0*
D Rail Length	115.0	88.0	152.0	152.0	84.0		30.0	152.0
E Max. Width	39.0	52.8	52.8	52.8	52.8			53.0
F Radial or vert. clearance below rail caps		20.0	21.5R	21.5R.	21.5R		3.0	21.5R
G Leg Base	90.0	58.0	90.0	90.0	74.0		21.5	46.4 (x2)
H Leg Tread	37.0	48.0	42.1	42.1	42.1		26.0	48.0
I Rail-end overhang from leg center	12.5	15.0	31.0	31.0	5.0		4.25	
Folding	No	No	Yes	Yes	Yes		No	Yes
Demountable	Yes	Yes	Yes	Yes	Yes		No	Yes
Caster Mounted	No	No	No	No	Yes		Yes	No
Unit Weight (pounds)	160	300	247	280	248		120	470
Nat. Stock No.			4920-00-293-8429	4920-00-589-6831	4920-00-086-6900	4920-00-672-8300		4920-00-625-4268
Air-Log Part No.	105349	108971	101830	101830-501	102915	105969	107327	105011

	3120	3160	3160A	3160B	3160C	3170†	6500
Capacity (pounds)	10,000	8000	8000	2200	8000	NOTE †	15,000
A Rail Spacing	90.0	60.0	60.0	60.0	60.0	48.0	48.0
B Rail Height (max.)	39.0*	33.0	39.0*	30.0**	35.0	28.0	43.31***
C Rail Height (min.)	30.0*	30.0	30.0*	39.0**	31.0		29.31***
D Rail Length	152.0	152.0	152.0	84.0	152.0	152.0	152.0
E Max. Width	95.0	64.8	64.8	64.8	66.3	55.0	52.8
F Radial or vert. clearance below rail caps	27.0	21.5	21.5	21.5	23.3	18.0	22.2R
G Leg Base	92.8	90.0	90.0	74.0	90.0	83.9	42.0 (x3)
H Leg Tread	90.0	54.1	54.1	54.1	60.0	45.25	48.0
I Rail-end overhang from leg center	29.6	31.0	31.0	5.0	31.0	34.0	13.0
Folding	Yes	Yes	Yes	Yes	No	No	No
Demountable	Yes	Yes	Yes	Yes	Yes	No	Yes
Caster Mounted	No	No	No	Yes	Yes	Yes	No
Unit Weight (pounds)	442	290	290	230	700	775	650
Nat. Stock No.						4920-00-769-1808	4920-00-724-9612
Air-Log Part No.	105186	106288	106761	106320	107218	106267	107303

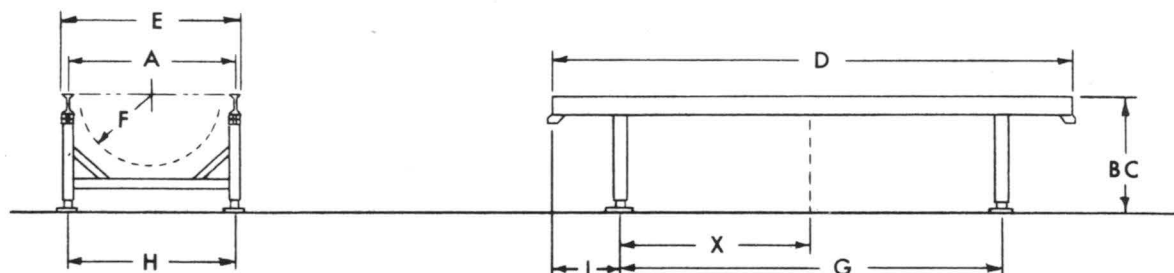
* Adjustable in 3.0 inch increments with screw adjust of ± 1.5 inch.

4920-00-796-1808

** Adjustable in 3.0 inch increments

*** Adjustable in 2.5 inch increments with screw adjust of ± 2.0 inch.

† A portable, engine test stand; 30,000 lb. thrust capacity. The unit is mounted on solid wheels, casting at the aft end.



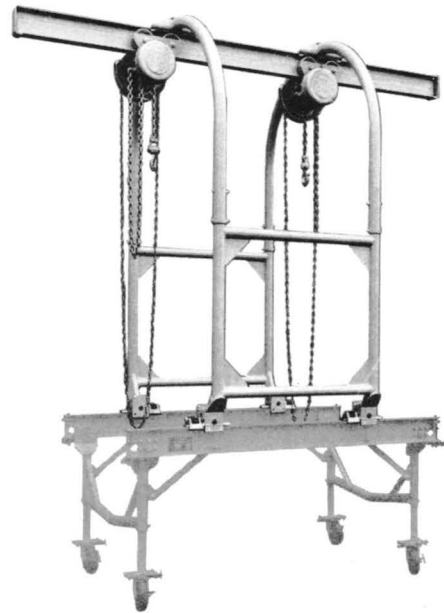
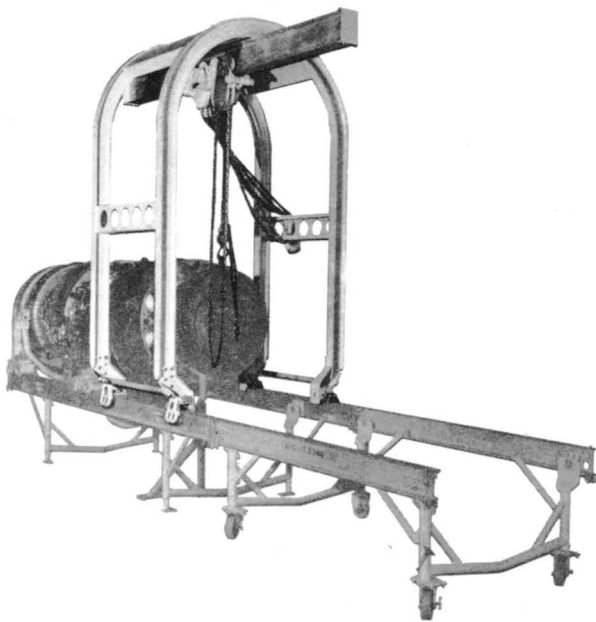


MONORAIL HOISTS . . .

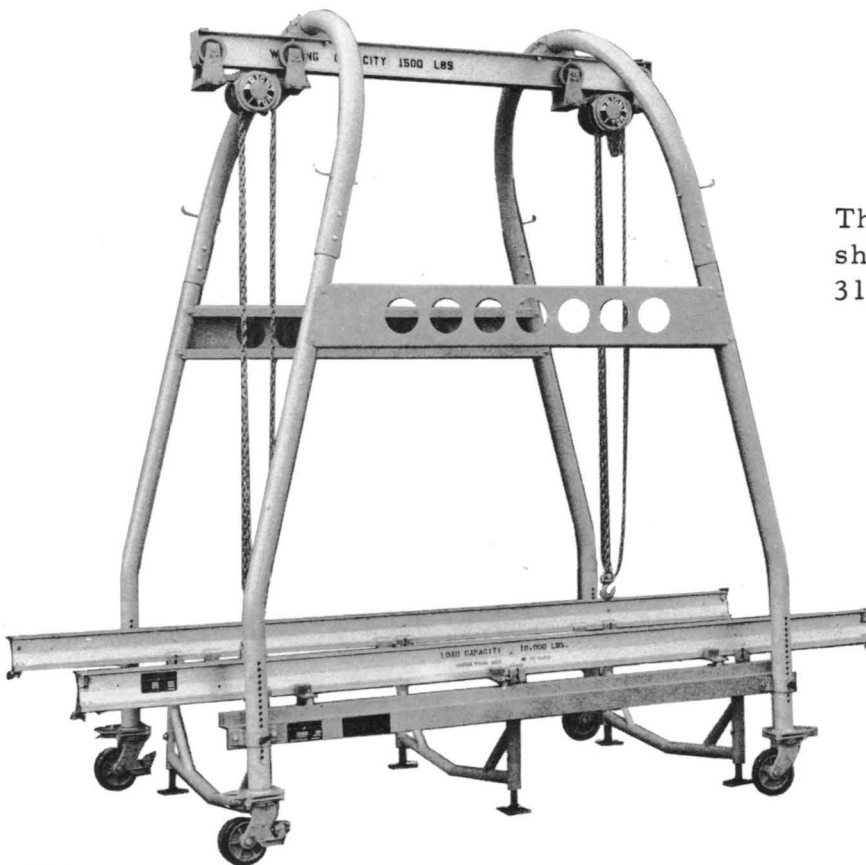
The Model 4600 Series Hoists are monorail, dual hoist assemblies of medium to heavy duty capacity, available in rail mounted or castered configuration. By rolling on or straddling the rails of a workstand line, either type may be utilized for stationized engine repair and build-up.

Additional data and design details are shown on the following pages.





Models 4600 and 4600A Monorail Hoists, Left to Right. Both hoists are equipped with Standard Roller Adapters for use as rolling elements on the Air-Log twin rail minor repair system.



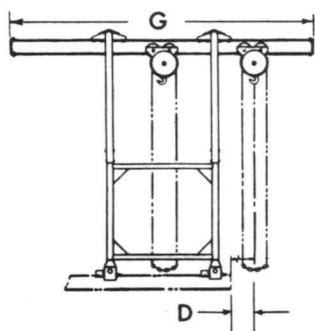
The Model 4630 Monorail Hoist shown in position with a Model 3110 Workstand.



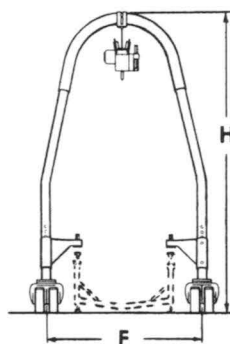
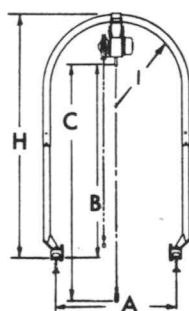
MONORAIL HOISTS

MAJOR DIMENSIONS AND OPERATIONAL DATA

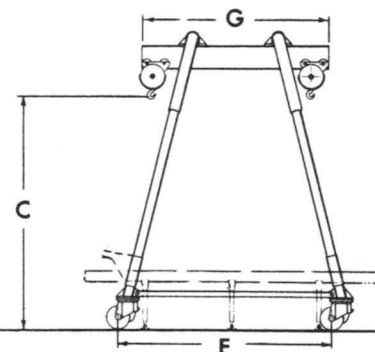
MODEL		4600	4660	4600A	4660A	4600B	4620	4630
A	<u>Rail Mounted</u>							
	Rail Spacing	48.0	60.0	48.0	60.0			
	Capacity: (pounds)							
	Between Supports	8000	8000	4400	4400			
	Any point on rail	4000	4000	2200	2200			
B	Max. Lift from Rails	78.0	78.0	77.8	77.8			
C	Total Lift	108.0	108.0	96.0	96.0			
D	Rail-end Overhang (max.)	25.0	25.0	25.0	25.0			
C E F	<u>Floor Mounted, Castering</u>							
	Straddle Clearance							
	For:					3000 Series	48.0 Stands	48.0 Stands
	Alignment Fixtures						48.0 Stands	48.0 Stands
	For:					8000	8000	1500
	Capacity: (pounds)						4000	
	Between Supports							
	Any point on rail							
	Total Lift					112.0	120.0	119.5
	Caster Base					110.0	110.0	100.0
	Caster Tread					80.0	80.0	67.0
G H I	<u>General</u>							
	Hoist Travel	106.5	106.5	105.5	105.5	75.0	66.0	74.2
	Monorail Length	117.5	117.5	121.5	121.5	96.0	96.0	91.0
	Max. Height:							
	From Rails	108.0	108.0	97.7	97.7			
	From Floor					154.0	154.0	140.5
	Yoke Radius (clearance)	26.5	26.5	26.5	26.5			
	Unit Weight (pounds)	560	560	693	693	2500	2540	685
	Nat. Stock No.	1730-00-604-1668		1730-00-627-1370				
	Air-Log Part No.	104955	106759	102651	106337	104444	109172	105470



RAIL MOUNTED



FLOOR MOUNTED

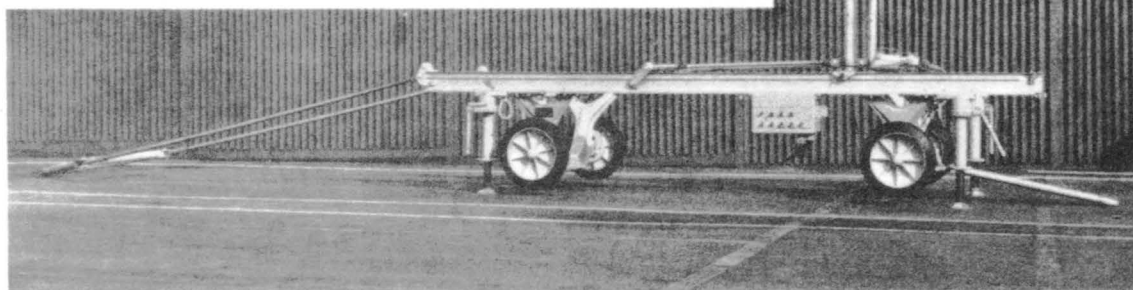
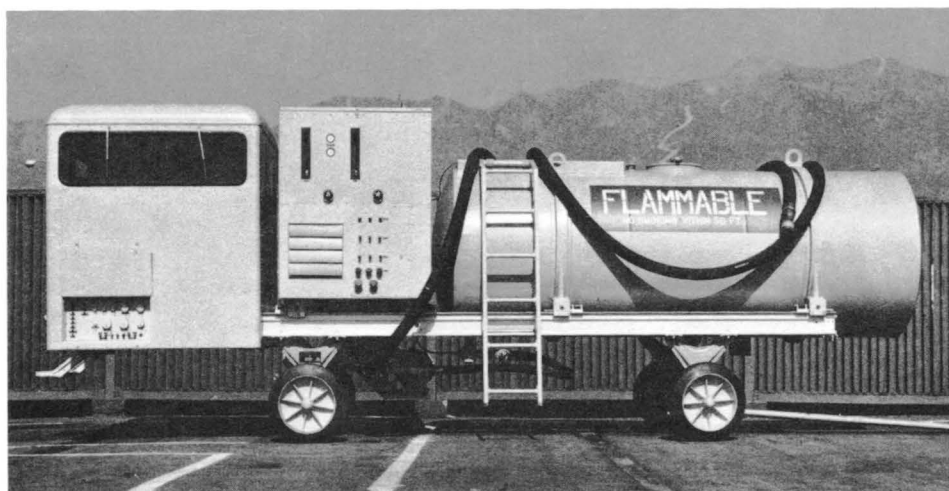




RUN-UP & TEST EQUIPMENT

- The Model 12,000C Jet Engine Run-Up and Test System provides a light weight universal, mobile and inexpensive means of running and testing turbojet engines. The system will handle engines up to 33,000 pounds thrust, regardless of make, model or QEC configuration. The components such as control booth, fuel tank, tie-down, load banks are packaged on the module principle allowing these components to be used together as a unit or separately if the condition so dictates. Also, the module principle simplifies the maintenance.
- The Model 2750 Agra Shell Dispenser is a portable, lightweight unit which is utilized for carbo-blast cleaning of jet engines. The Model 2750 is an approved, standard design, refined to its present status following a program of prototype field testing conducted in close cooperation with the U.S. Air Force. Results of field tests show a significant improvement in engine power, reduced RPM, exhaust temperature and fuel consumption, in addition to greatly reduced maintenance costs and engine "down time".

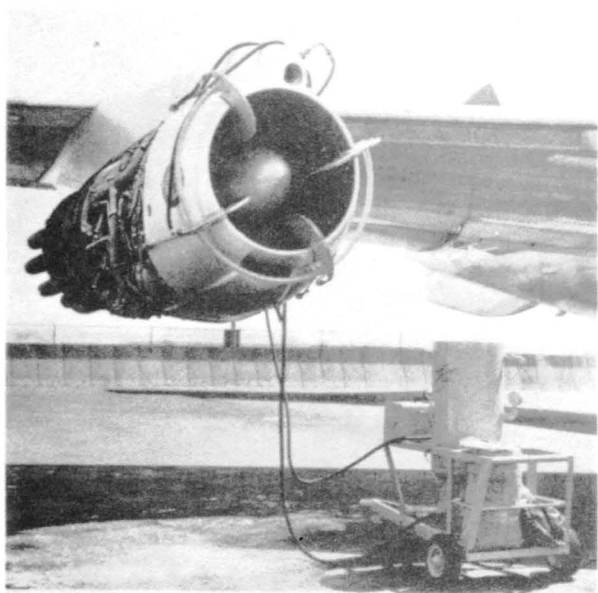




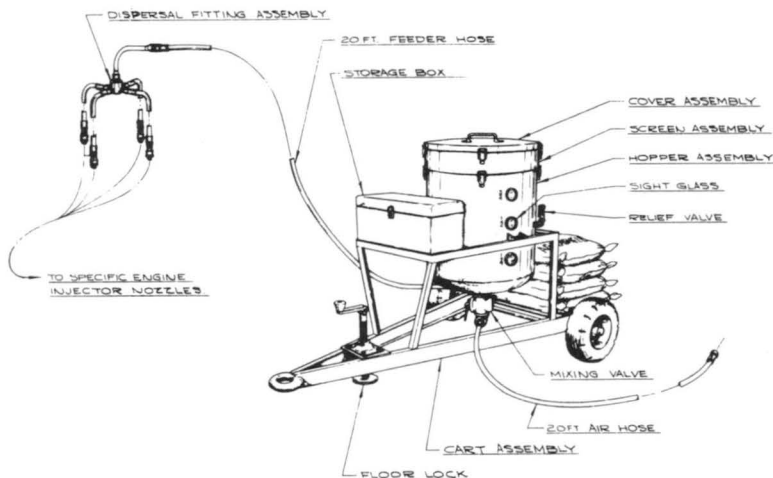
The MODEL 12000 ENGINE RUN-UP and TEST System elements.

Above: Operator's cab, Power section and Auxiliary Fuel Tank

Below: Engine Thrust Stand with Tie-Down Apparatus



The MODEL 2750 AGRA SHELL DISPENSER. Photo at left shows the prototype in one of many field test runs.



RUN-UP AND TEST SYSTEMS

MAJOR DIMENSIONS AND OPERATIONAL DATA

MODEL 12,000 C

<u>CONTROL CAB & FUEL TANK ASSEMBLY</u>		<u>ENGINE TRAILER & TIE-DOWN ASSEMBLY</u>	
Length	222 inches	Length	180 inches
Height	84 inches	Height	40 inches
Width	62 inches	Width	58 inches
Fuel Capacity	1000 gallons	Trailer Weight	725 pounds
Cab Weight	900 pounds	Tie-Down Weight	300 pounds
Trailer Weight	725 pounds	Jacks and Stabilizer	
Tank Weight	900 pounds	Weight	200 pounds
Total Shipping Weight - 3750 pounds			
Control booth accommodates two operators. Input power is 208 VAC 400 Cycle/28 VDC , or 208 VAC 60 Cycle 15 KVA Fuel tank has a capacity of 1000 gallons complete with necessary piping, pressure feed systems and safety provisions.			
AIR-LOG PART NO. 109018			

MODEL 2750 PORTABLE DISPENSER DATA	
O/A Height	51.0
O/A Width	48.0
O/A Length	98.0
Average Engine Cleaning Time	15-20 Min.
AIR-LOG PART NO.	109120

DISPENSER INJECTOR KIT ORDERING GUIDE

AIR-LOG PART NO.	ENGINE	BELLMOUTH MFG.
109230	J57	
109231	J57	Pratt & Whitney
109388	J57	North American
109389	J57	Mc Donnell
109376	J75	Pratt & Whitney
109390	J75	Republic
109375	J79	General Electric
109391	J47	
109392	J47	General Electric
109512	JT3C-6 7 & 12	



ACCESSORY EQUIPMENT

The Model 2400 series Power Pack units offer a selection of electrically driven, hydraulic units which may be used on any "B" designated positioning trailer.

The power packs, which vary to suit particular electrical requirements and hydraulic flow rates, are self-contained units which include a selective valving system which operates in lieu of the standard hand pumps.

The hand pumps are not blocked out of the trailer system, and may be used to augment the power pack when fine positioning is necessary.



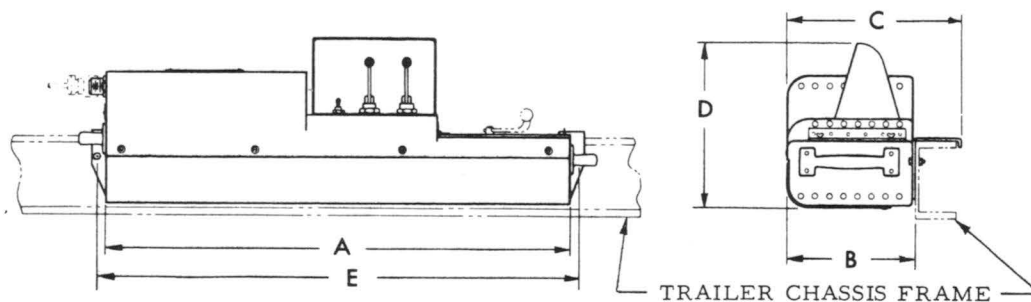
HYDRAULIC ACCESSORIES

MAJOR DIMENSIONS AND OPERATIONAL DATA



The Model 2400 Power Pack, showing protected operating levers. Clean, compact design is typical of the series of auxiliary hydraulic units.

MODEL		2400	2410	2410A
	Motor	2 HP, 2500 RPM, 110/220 VAC, 3 PH 400 Cycle	2.5 HP, 3600 RPM, 220/440 VAC, 3 PH 60 Cycle	2.5 HP, 3400 RPM 110/220 VAC, 1 PH 60 Cycle
	Flow Rate	0.90 GPM @ 3000 PSI, 0.45 Ea. Outlet	1.34 GPM @ 3000 PSI, 0.67 Each Outlet	1.28 GPM @ 3000 PSI 0.64 Each Outlet
A	Length	36.0	36.0	36.0
B	Width (Basic)	8.70	9.62	9.62
C	Width (Incl. Bracket)	12.30	13.25	13.25
D	Height	12.75	12.75	12.75
E	Dim. Between Bracket Mount Holes	37.10 to 37.14	37.10 to 37.14	37.10 to 37.14
	Unit Weight	56 Lbs.	80 Lbs.	104 Lbs.
	Nat. Stock No.	1730-00-654-8389		
	Air-Log Part Number	105421	106111	106118



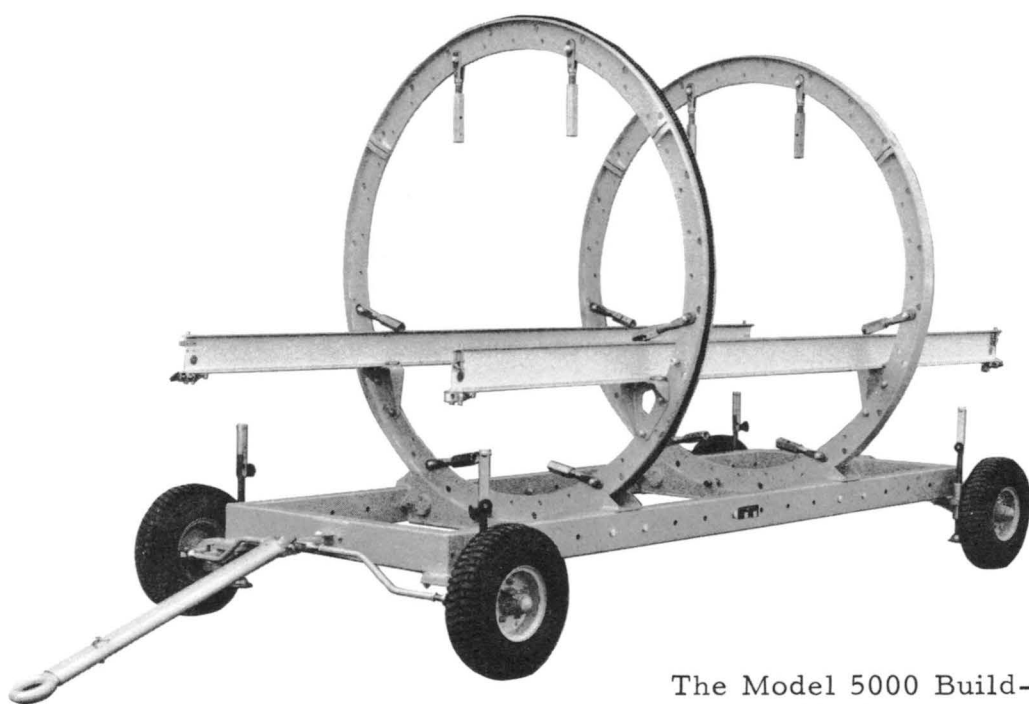


BUILD-UP TRAILERS & ADAPTERS

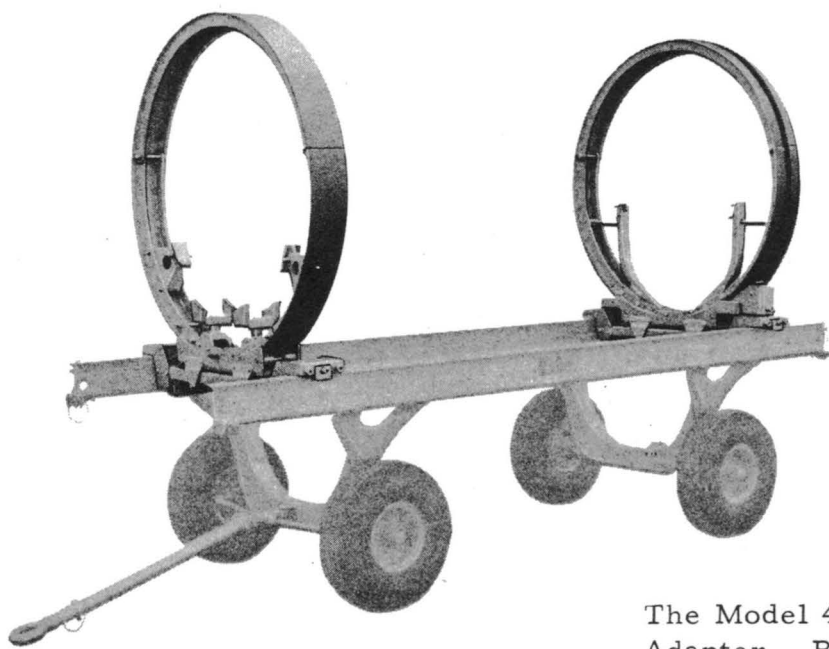
The Model 5000 Series Trailer and 4500 Series Roll-Over Adapter provide a 360 degree axial rotation capability which greatly speeds and simplifies build-up, inspection and repair of jet engines.

Capacities, dimensions and general design data are listed in the following tables.





The Model 5000 Build-Up and Maintenance Trailer. This 48 inch, Roll-over trailer is also available in a 60 inch version as the Model 5060.



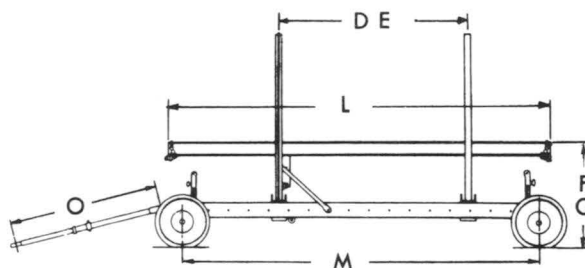
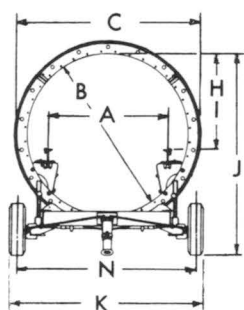
The Model 4500 Universal Rollover Adapter. Both sections of the adapter are roller mounted for use on any of the standard twin rail system elements.



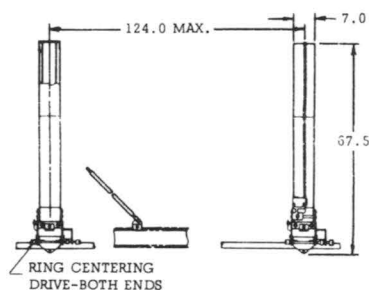
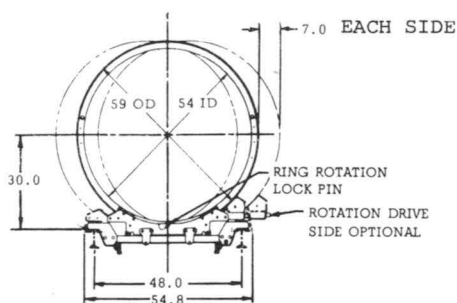
BUILD-UP TRAILERS AND ADAPTERS

MAJOR DIMENSIONS AND OPERATIONAL DATA

MODEL	5000	5060
Capacity	8000 lbs.	8000 lbs.
A Rail Spacing	48.0	60.0
B Inside Ring Diameter	64.0	72.25
C Outside Ring Diameter	72.0	82.0
D Distance Between Rings (min)	24.0	8.5
E Distance Between Rings (max)	126.0	118.5
F Normal Rail Height	45.0	44.3
G Alt. Rail Height	39.0	
H Normal Clearance Above Rails	37.5	46.0
I Alt. Clearance Above Rails	43.5	
J O/A Height	82.5	90.6
K O/A Width	75.5	82.0
L Rail Length	152.0	152.0
M Wheelbase	141.0	141.0
N Wheel Tread	69.0	69.0
O Towbar Length	44.5 - 72.0	44.5 - 72.0
Nat. Stock No.	1740-00- 534-0595	
Air-Log Part No.	101671	107091



MODEL	4500
Capacity	4500 lbs. per ring
Weight	675 lbs.
Rotation	360°
Nat. Stock No.	1730-00- 574-2110
Air-Log Part No.	102930





ADAPTERS

Air-Log adapters are divided into two basic categories:

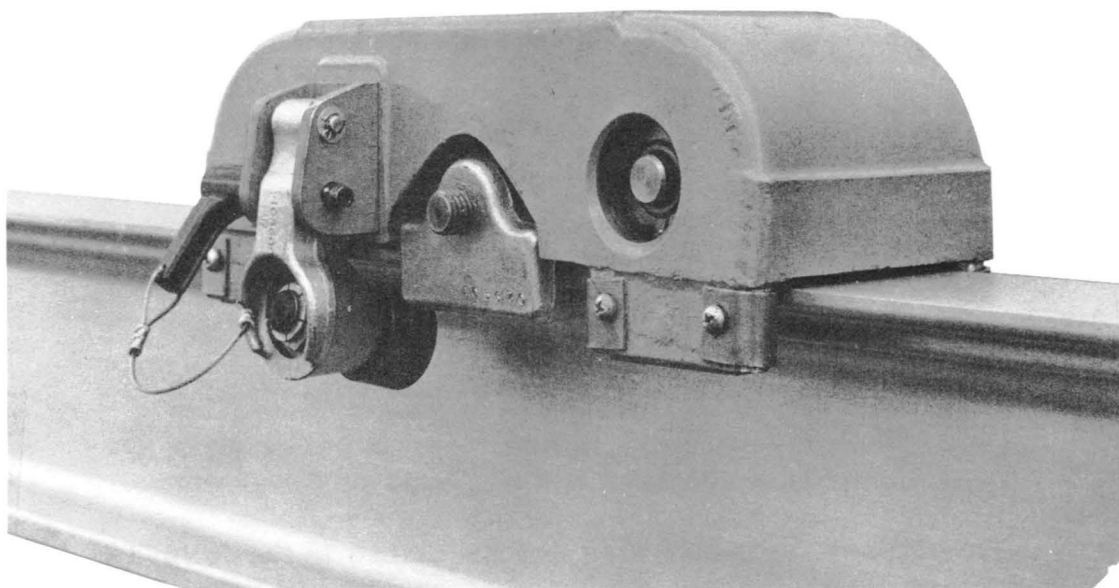
ROLLER ADAPTERS. The standard, single and double roller adapters are the rolling element between the various component adapters and the rails of the system.

The various types are illustrated and described in the following pages of this section.

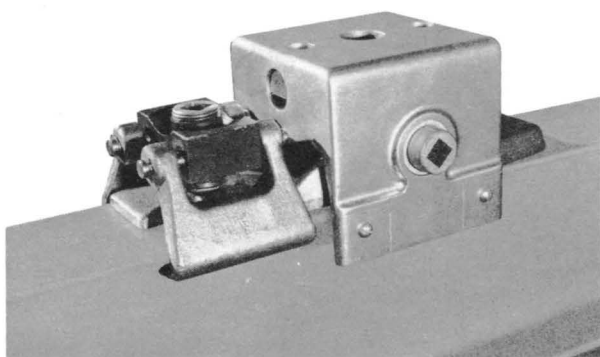
COMPONENT ADAPTERS. The variable element which results in the multiple purpose capability of the Air-Log System and the system elements themselves. In this group are component handling adapters of varying types, engine transportation, installation and run-up adapters.



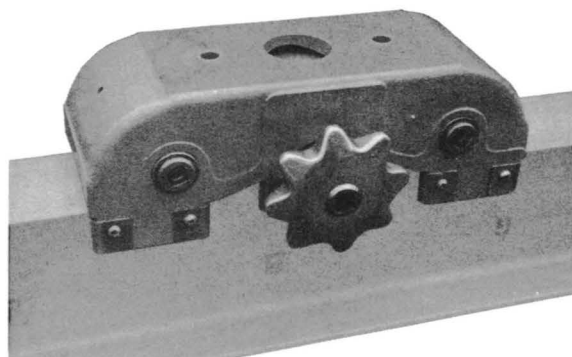
ROLLER ADAPTERS



The Model 2620 Roller Adapter is used in two or four point support applications and is equipped with an up-load roller for use in asymmetrical load conditions. When clamping brake is fully backed off and up-load roller is swung out, the Adapter may be lifted vertically from the rail.



Model 2550 Single Roller and 2610 Double Roller Adapters. All Air-Log Standard roller adapters are fitted with clamping brakes, and may be operated



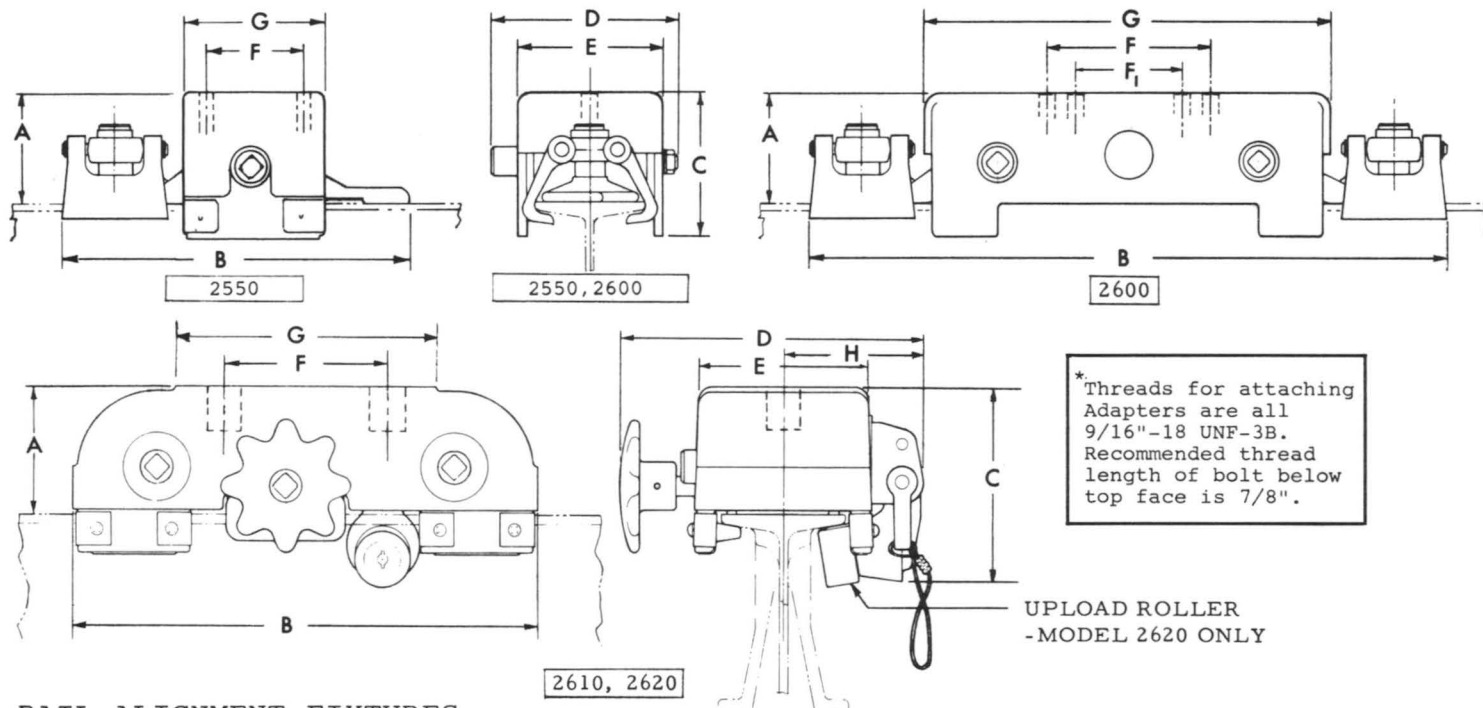
with a standard, 1/2 inch square socket drive. The center brake, Model 2610 may be fitted with an upload roller, becomes Model 2620.



ROLLER ADAPTERS AND RAIL FIXTURES

MAJOR DIMENSIONS AND OPERATIONAL DATA

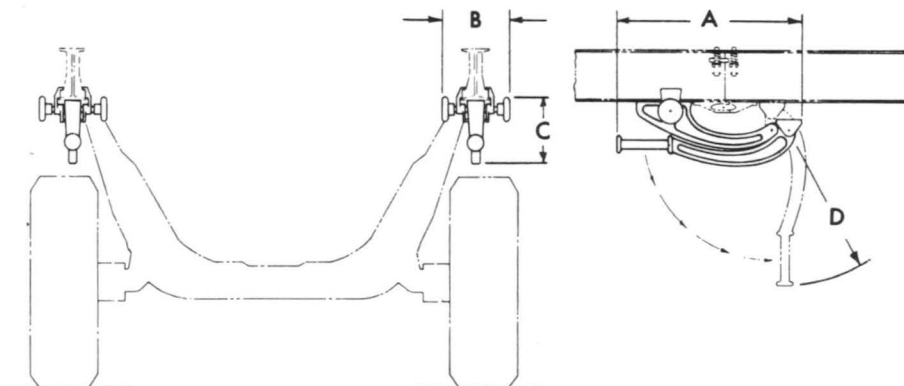
	2550	2600	2610	2620
Working Capacity (down)	5500	5000	7500	7500
(up)	650	1500	650	650
(side)	650	700	1000	1000
Ultimate Braking Cap.	7000	14,000	7000	7000
Dimension A	3.38	3.38	3.38	3.38
B	10.50	19.50	12.50	12.50
C	4.375	4.40	4.37	5.25
D	5.25	5.65	6.96	8.15
E	4.61	4.44	4.52	4.52
F	3.25	5.00	5.00	5.00
F ₁		3.25		
G	4.53	12.50	6.90	6.90
H			2.56	3.75
Weight (pounds)	11.5	28.0	18.5	19.0
Nat. Stock No.	1730-00-986-3702		1730-00-606-4138	1450-00-711-0283
Air-Log Part No.	104568	100882	105710	105612



RAIL ALIGNMENT FIXTURES

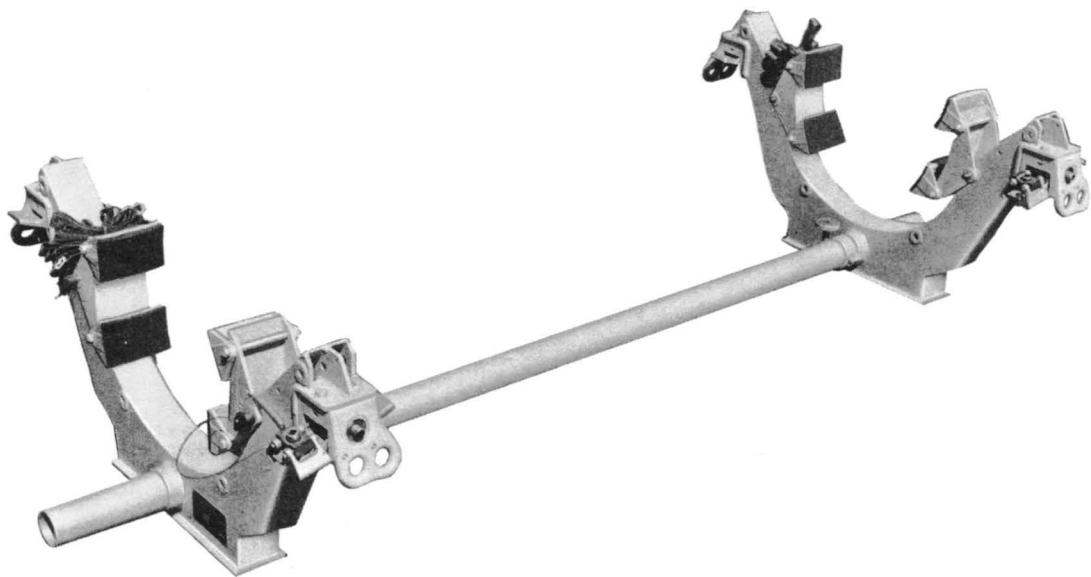
		2100
A	O/A Length	22 in.
B	O/A Width	8 in.
C	O/A Height	8 in.
D	Clearance Arc	18.4 in.
	Unit Weight	22 lbs.
	Nat. Stock No.	1730-00-631-6419
	Air-Log Part No.	105904*

*Kit contains two(2) fixtures.
Part no. for single fixture
is 105275.



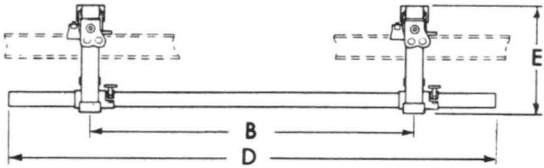
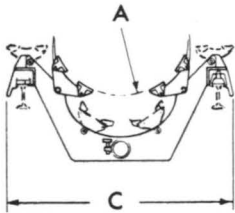
COMPONENT ADAPTERS

MAJOR DIMENSIONS AND OPERATIONAL DATA



Model 3500 Universal Component Adapter. Quick-change, pin mounted pads carry shapes ranging from 15 inches in diameter to a flat surface.

MODEL 3500 SERIES (General)					
A	Range of Adaptability	13.0 Dia. to Flat Surface	C	O/A Width	55.50
	Distance Between Yokes	9.60 to 111.40	D	O/A Length	120.00
B			E	O/A Height	26.00
				Unit Weight	260 Lbs.
		3500	3500A	3500B	
	Capacity	8,000 Lbs.	10,000 Lbs.	12,000 Lbs.	
	Nat. Stock No.	1730-00-534-0570			
	Air-Log Part No.	101719	109836	109916	



ENGINE HANDLING ADAPTER INDEX

The JT8D Engine Handling Adapter illustrated below is typical, in its category, of the adapters and adapter kits listed in the following index.

In the index, the absence of aircraft designation in the right hand column indicates a general application of that adapter without specific reference to any particular aircraft.



ENGINE HANDLING ADAPTER INDEX

<u>ENGINE</u>	<u>NUMBER</u>	<u>DESCRIPTION</u>	<u>AIRCRAFT</u>
J57	102884	ADAPTER KIT - INST. & REMOVE, AFT FUSELAGE	F8U
	102908	ADAPTER KIT - INSTALL (-P4)	F8U
	102959	ADAPTER KIT - INSTALL (-P6)	A3D
	105001	ADAPTER KIT - INST. AND TRANS (-P43)	KC-135
	105002	ADAPTER KIT - DIFFUSOR CASE	B-52
	105003	ADAPTER KIT - INST. AND ROLL (P1 TO P31)	"
	105004	ADAPTER KIT - TRANSPORT (-P1 TO P31)	"
	105006	ADAPTER KIT - TRANSITION (-P1 TO P31)	"
	105064	ADAPTER KIT - TRANSPORT A/B LOW	
	105065	ADAPTER KIT - TRANSPORT A/B HIGH	
	105066	ADAPTER KIT - TRANSPORT NON A/B	
	105562	ADAPTER KIT - INST. AND ROLL (-P43)	B-52G
	105901	ADAPTER KIT - TRANSPORT (-P43)	B-52G
	105902	ADAPTER KIT - TRANSITION (-P43)	B-52G
	106107	ADAPTER KIT - BLEED PORT	
	201017	ADAPTER KIT - RUN-UP (-P6)	A3D
	201018	ADAPTER KIT - RUN-UP (-P4)	F8U
	201027	ADAPTER KIT - RUN-UP A/B BARE	
	201029	ADAPTER KIT - RUN-UP NON A/B	
	E3289	ADAPTER PACK. - INSTALL. (-P7)	F-100
	E2100	ADAPTER PACK. - A/B HANDLING	F-100
	MDE 20625-1	ADAPTER ASSY - INST. AND TRANS	F-101
	MDE 20625-301	ADAPTER ASSY - INST. AND TRANS	F-101
	MDE 20626-1	ADAPTER ASSY - ROLLOVER	F-101
	CVSE 1114	ADAPTER ASSY - INST. AND ROLLOVER	F-102
J65	102860	ADAPTER KIT - INST. & REMOVE AFT FUSELAGE	A4D
	102860-501	ADAPTER KIT - INST. & REMOVE AFT FUSELAGE	A4D
	102867	ADAPTER KIT - INSTALL (-16)	A4D
	105067	ADAPTER KIT - TRANS	
	105363	ADAPTER KIT - TRANS (QEC)	A4D
	201019	ADAPTER KIT - RUN-UP (-16)	A4D
J69	107119	ADAPTER KIT - TRANSPORTATION	
J71	101164	ADAPTER KIT - INST & TRANS (-3, -9, -11)	B-66
	105069	ADAPTER KIT - TRANSPORTATION	



<u>ENGINE</u>	<u>NUMBER</u>	<u>DESCRIPTION</u>	<u>AIRCRAFT</u>
J73	105073	ADAPTER KIT - TRANSPORTATION	
	104408	ADAPTER KIT - TRANSPORTATION	
	106959	INTERMEDIATE SUPPORT	F-106
	107142	ADAPTER KIT - ALL EXCEPT ROLLOVER	"
	107152	FITTING - TRANS & RUN-UP	"
J79	105604-501	ADAPTER KIT - INSTALLATION (-3)	F-104
	105605-501	ADAPTER KIT - ROLLOVER (-3)	"
	105865	ADAPTER KIT - TRANS (-1, -3, -5, & -7)	
	106853	KIT - AUXILIARY JACK	
J85	107659	ADAPTER KIT - INST & RUN-UP (PROTO)	T-38
T-53	108823	TRANSMISSION HANDLING ADAPTER	H-43B
	201028	ENGINE TRANS	"
JT3	106282	ADAPTER KIT - INSTALL & TRANS	707
	106316	ADAPTER KIT - BLEED PORT	
	106707	ADAPTER KIT - INST & TRANS (W/BOX)	DC-8
	107304	ADAPTER KIT - COMBINATION JT3 - JT4	707
	107429	ADAPTER KIT - INST & TRANS (W/O BOX)	DC-8
JT3C-7	107790	ADAPTER KIT - INST & TRANS	707
	108547	ADAPTER KIT - TRANS (48" SYSTEM)	707
JT3D-8	109260	ADAPTER KIT - INST. REMOVE & TRANS	707-720
	109012	ADAPTER KIT - INST. REMOVE & TRANS	DC-8
	114222-501	ADAPTER KIT - INST. REMOVE & TRANS	DC-8
	116621	ADAPTER KIT - INST. REMOVE & TRANS	707-720
JT4	106315	ADAPTER KIT - INSTALL & TRANS	707
	106317	ADAPTER KIT - BLEED PORT	
	107109	ROLLOVER FITTINGS (FOR 5060)	707
	107304	ADAPTER KIT - COMBINATION JT3 - JT4	707
	107306	ADAPTER KIT - ADJUSTABLE	DC-8
	107424-501	ADAPTER KIT - INST & TRANS (SLING)	"
	PWA 8740	ADAPTER ASSY - REPAIR (& DETAILS)	
	(& DETAILS)		
	107680	ADAPTER KIT - COMBINATION	DC-8 & 707
	107424	ADAPTER KIT - INSTALL & TRANS (COMPATIBLE WITH DACO HOIST)	DC-8
	107853	ADAPTER KIT - DIFFUSER CASE	
	107854	ADAPTER KIT - INLET CASE	



<u>ENGINE</u>	<u>NUMBER</u>	<u>DESCRIPTION</u>	<u>AIRCRAFT</u>
JT8D	114966	ADAPTER KIT - INST REMOVE & TRANS	DC-9 48" RAIL SYSTEM
	111042	ADAPTER KIT - INST REMOVE & TRANS	DC-9
	111042-501	ADAPTER KIT - INST REMOVE & TRANS	727
	111042-503	ADAPTER KIT - INST REMOVE & TRANS	727
	111042-505	ADAPTER KIT - INST REMOVE & TRANS	727
	111042-507	ADAPTER KIT - INST REMOVE & TRANS	727
	116884	ADAPTER KIT - INST REMOVE & TRANS	727
	114215	ADAPTER KIT - INST REMOVE & TRANS	737
	116886	ADAPTER KIT - INST REMOVE & TRANS	737
JT12	110072	ADAPTER KIT - TRANSPORTATION	C-140
CJ 805	104882	ADAPTER ASSY - INST & TRANS	880
	107059	ADAPTER ASSY - INST & TRANS (60")	880
CJ 805-21 (FAN)	107646	ADAPTER KIT - INSTALLATION	600
CJ 805-23 (FAN)	108877	ADAPTER KIT - INSTALLATION	990
CONWAY	107275-501	ADAPTER KIT - INSTALL & TRANS	DC-8 & 707
AVON 522	107110	ROLLOVER FITTINGS FOR 5060	CARAVELLE
	107123	ADAPTER KIT - INSTALL & TRANS	CARAVELLE
ORPHEUS	108773	INSTALL & TRANS	G-91



AL-61-94

REV, MAY 1980



PROPRIETARY ITEM

NOTICE TO ALL PERSONS RECEIVING THIS DRAWING

Recipient of this drawing agrees that this drawing is only conditionally issued, and neither receipt nor possession thereof confers or transfers any right in, or license to use, the subject matter of the drawing, or any design or technical information shown thereon, or any right to reproduce this drawing or any part thereof, and recipient will not so use or reproduce, except by written permission from Air Logistics Corporation.